



Independent
Evaluation Office
GLOBAL ENVIRONMENT FACILITY

Sustaining Protected Area Outcomes of GEF Support

Highlights from the Impact Evaluation of GEF Support
to Protected Areas and Protected Areas Systems

Jeneen R. Garcia

EVALUATION OFFICER

02 September 2016

In Partnership with

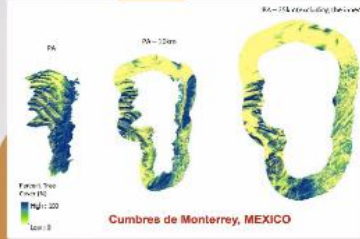


Institute of
Development Studies

WHAT IS THE **IMPACT**
OF GEF SUPPORT ON PROTECTED AREAS
AND PROTECTED AREA SYSTEMS?

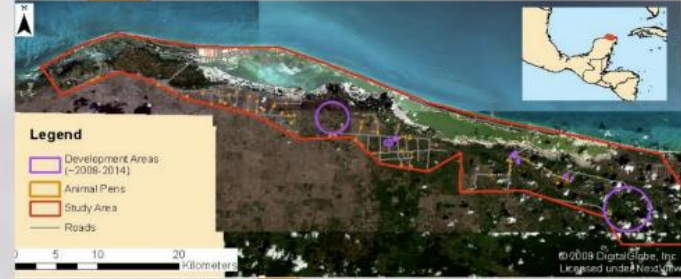
TOOLS & METHODS

NATURAL SCIENCES



High-resolution satellites

SPATIAL



Global databases

Remote sensing analysis

Supercomputers

QUANTITATIVE

35351 PIXELS **191** TERMINAL EVALUATIONS

Peer-reviewed literature

Propensity score matching

Portfolio analysis

QUALITATIVE

Generalized Additive Models

33 CONTEXTUAL VARIABLES **>30000** PAs

Regression trees and random forest modeling

2440 METTs **7** COUNTRIES

Principal Components Analysis

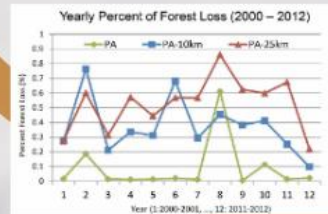
Linear regression

28 SITES

Case study analysis & synthesis



Mixed and fixed effects modeling



Qualitative Comparative Analysis

SOCIAL SCIENCES

EXTENT OF GEF SUPPORT

US\$ 3.4 billion

in grants to

137 countries

US\$ 12.0 billion

in cofinancing for

618 projects

2,785,350 sq km

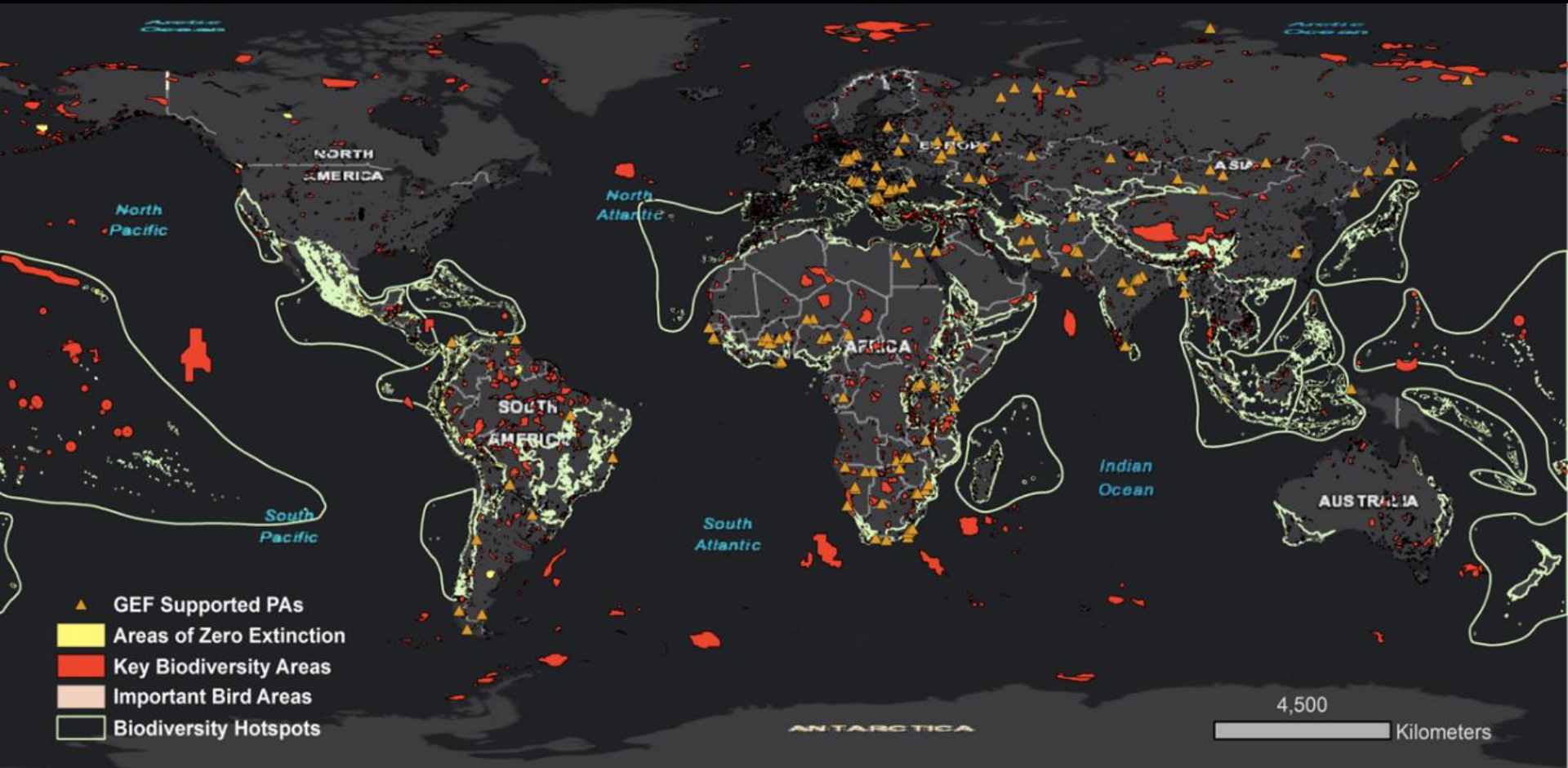
GEF support evolving
with latest science

1,292 non-marine PAs

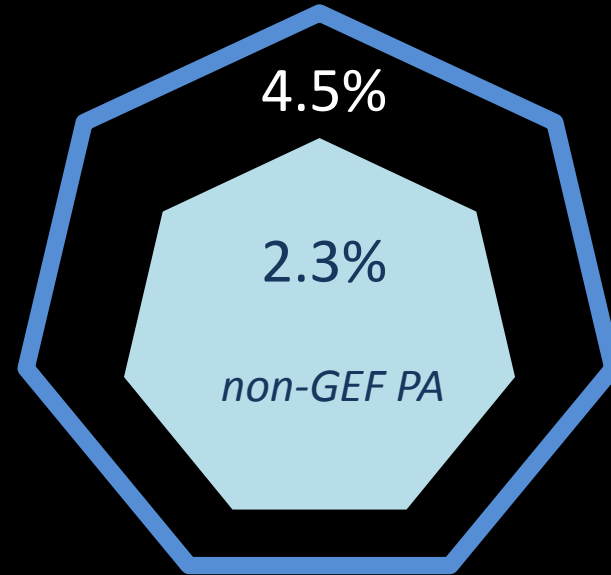
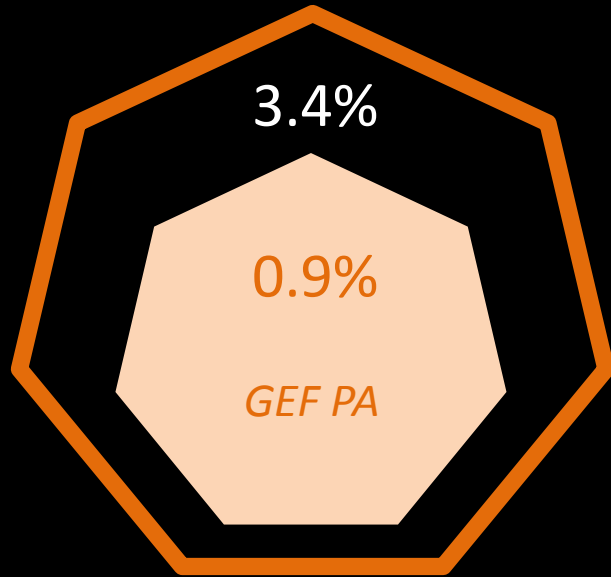
58% Key Biodiversity Areas

31% other international
designation



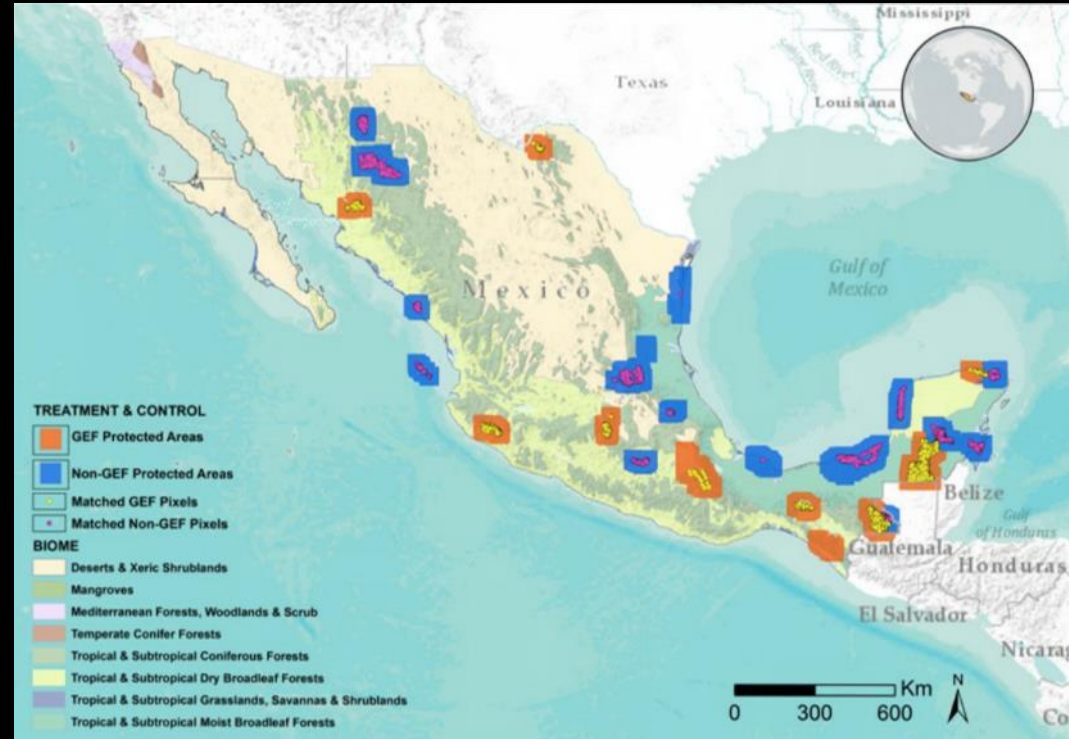


Less forest cover loss in GEF PAs



in the same biomes and countries between 2001 and 2012

In Mexico...




23% less forest loss in GEF vs. non-GEF PAs

17 GEF PAs

11 non-GEF PAs

7 countries



Improved infrastructure &
equipment

Expanded staff skills

Functional monitoring &
reporting system

WHAT MAKES PROTECTED AREA OUTCOMES **SUSTAINABLE**?



BUILD GOVERNMENT CAPACITY TO EARN MORE AND LOSE LESS



ENGAGE COMMUNITIES THROUGH BENEFITS



A low-angle photograph of a large tree trunk and its canopy against a bright sky. The tree trunk is thick and textured, with a prominent vertical crevice. The canopy is dense with green leaves, and the sky is visible through the branches. The overall scene is bright and natural.

**PROVIDE LONG-TERM
SUPPORT**

THE CHALLENGES REMAIN....

INCREASING POPULATION

INCREASING PA COVERAGE

**INCREASING WILDLIFE
NUMBERS**

**LARGER ECONOMIC AND
GLOBAL DRIVERS**

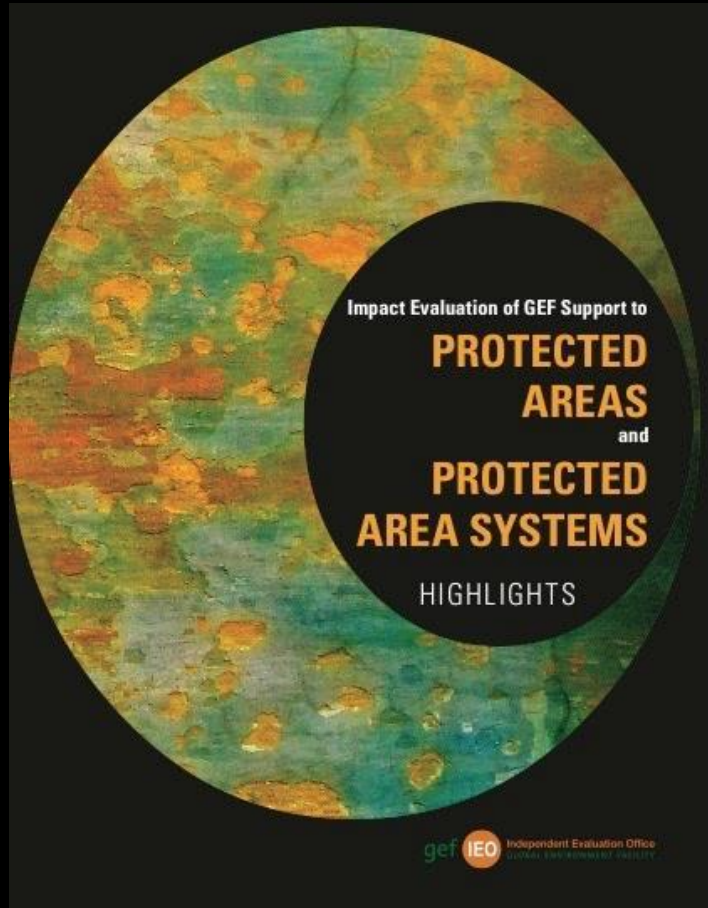


CONTEXT IS STILL KEY!



Thank you!

For more information, visit www.gefio.org



GET THE FULL REPORT HERE

<http://gefieo.org/evaluations/evaluation-multiple-benefits-gef-support>

All photos taken in Uganda by Jeneen R. Garcia, except for photo of tree taken in Mexico by Susana Rojas.