



Independent
Evaluation Office
GLOBAL ENVIRONMENT FACILITY

Enhancing global environmental benefits
through excellence in evaluation



Independent
Evaluation Office
GLOBAL ENVIRONMENT FACILITY



Independent
Evaluation Office
GLOBAL ENVIRONMENT FACILITY

Chemicals & Waste Focal Area Study

CHEMICALS AND WASTE

Evolution of strategy

GEF-3

POPS
ODS

GEF-4

+Sound
chemicals
management

GEF-5

Chemicals
strategy
+Mercury

GEF-6

Chemicals
and Waste
Focal area



CHEMICALS AND WASTE

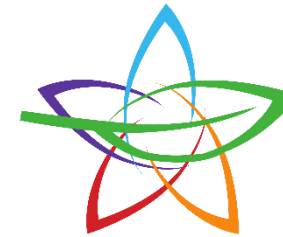
Relevance to Conventions



BASEL CONVENTION



STOCKHOLM
CONVENTION



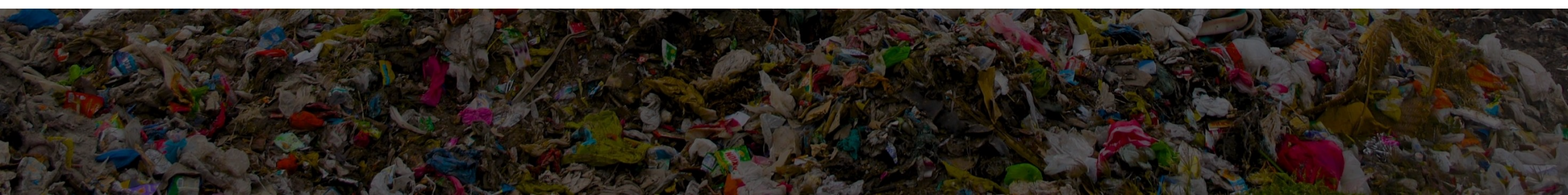
Rotterdam
Convention



The
Montreal
Protocol 25 years of
Ozone
Protection



Multifocal
projects



CHEMICALS AND WASTE

Issues on relevance to conventions



Update of the national implementation plans



Clearing-house mechanism and information exchange



No priority for countries that have not received funding



Programming not appropriately balanced



CHEMICALS AND WASTE Performance

Satisfactory



Factors behind success in POPs



Strong government ownership



Private sector commitment (incl. co-financing)

CHEMICALS AND WASTE

Broader adoption

Satisfactory

Mainstreaming 59%

Scaling up 24%

Market change 12%

Replication 6%

Any broader adoption 78%

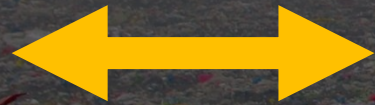
Main constraint



Demonstration projects often not financially attractive

CHEMICALS AND WASTE

Challenges to be managed



Promoting
sector-wide
approaches



Resource scarcity
contributes to an
uneven playing
field



Balancing hard
outcomes metrics
against relatively
softer
interventions



Incomplete data
on aggregate
impact of closed
projects

CHEMICALS AND WASTE

Opportunities to Improve in GEF-7



Better planning towards scaling up and sustainability



Ozone depletion programs have a new relevance



More support for broad-based regulatory reform and sector-wide approaches



Better communication between GEF partners



Better tracking tools, terminal results and consistent M&E resources





Independent
Evaluation Office
GLOBAL ENVIRONMENT FACILITY

Chemicals & Waste Focal Area Study